

Using the Lawn Scarifier

1. Wear protective equipment including ear defenders and good strong footwear.
2. Make sure the bag or box that catches the weeds and debris is fitted correctly.
3. Always hold the scarifier handle firmly with both hands while working.
4. Keep hands and feet clear of the tines at all times.
5. Do not operate the scarifier on concrete or other hard surfaces. Injury or damage may occur.
6. Do not run the motor when moving over paving or hard ground, or when positioning the scarifier to start work.
7. Do not tilt the scarifier to expose the tines if they are still rotating - the tines can throw out small stones or other hard objects.
8. While working, keep a lookout for any stones or other objects in the path of the scarifier. Stop and clear them out of the way.
9. Stop the lawn scarifier if someone approaches the work area.
10. Switch off and unplug before making any adjustments other than scarification depth, or before leaving the machine unattended.
11. If the scarifier starts to labour and slow down, raise the scarification depth so less material is being removed. Make a second pass later, with a deeper setting.
12. If debris or rubbish gets tangled in the tines, switch off and unplug before clearing the blockage or working on the scarifier.
13. Make sure that the machine ventilation slots do not become blocked with dust and debris. Switch off and unplug if the scarifier needs cleaning.
14. Keep the cable away from feet and away from the scarifier tines while working.
15. Pass the cable over the shoulder, or a loop should be held in the hand.
16. Be very careful not to run over the cable, especially when working around obstacles or in tight corners.
17. If the cable gets trapped under the machine, switch off and unplug at the mains before clearing it.
18. If the cable is cut or damaged in any way, switch off and unplug at the mains before inspecting it. If the cable is damaged, do not use it again. Contact the hire company if the cable was attached to the scarifier.
19. Take care not to accidentally pull the plug from the socket.
20. Always switch off and unplug at the mains before leaving the scarifier unattended.
21. Clean the machine at the end of each day and before returning it to the hire company.
22. If the scarifier has a handle that can be folded for storage or transport, make sure that the mains cable does not become trapped as the handle is folded.
23. If the equipment does not work properly, do not attempt to repair it. Contact the hire company.

Please keep this leaflet safely as it may be required for future reference

Lawn Scarifier

The rules and procedures in force where people are at work may require the person responsible for this equipment to carry out a specific risk assessment.

It is important to read this entire leaflet BEFORE using the Lawn Scarifier

1. Electricity can be hazardous and must always be used with great care.
2. This lawn scarifier is designed to remove moss, dead grass, and weeds from the lawn.
3. The action of this scarifier can cause injury or damage if the machine is not used in a careful and controlled way.
4. Keep hands and feet well away from the cutting blades.
5. If the electric lawn scarifier has not been used before, practise on the least important area of the lawn until confident that the scarifier is not damaging the grass.
6. Plan the work and think ahead to make sure work will always be carried out safely.
7. The following items of personal protective equipment must be worn as a minimum: ear muffs or plugs giving protection for levels up to 94 dB(A); strong boots or shoes giving good foot protection; strong gloves for handling any rubbish in the grass; rcd if using 230 volt (mains) supply.
8. This machine must not be used by minors, or by anyone under the influence of drugs or alcohol.
9. This lawn scarifier is designed for operation by an able bodied adult. Anyone with either temporary or permanent disability must seek expert advice before using it.



WORK AREA

1. Do not use this lawn scarifier where there is a danger of explosion. It will ignite fumes from petrol, or gas cylinders.
2. Protect other people from the noise and from injury. Warn others to keep away.
3. Do not use this scarifier on lawns where the grass is long. Long grass will be pulled out and could bind the tines.
4. Make sure the lawn you are about to rake is free of large stones, pieces of wood, lengths of wire, or anything else that may fly out or damage the machine. Wear gloves to do this.
5. Plan the route around the lawn so that there is no danger of you running over the cable.
6. Do not use the lawn scarifier in the rain or where the electrical parts may get wet.

OPERATORS

1. The following items of personal protective equipment (ppe) are the minimum that should be worn when using this scarifier. Particular jobs or environments may require a higher level of protection.
2. This equipment is likely to cause noise levels up to 94 dB(A) - wear appropriate ear muffs or plugs giving hearing protection for this level as a minimum.
3. Strong boots or shoes giving good foot protection must be worn.
4. Strong gloves will be required to handle any rubbish or debris in the grass.
5. Anybody who is working nearby will also need to wear appropriate personal protective equipment.

LAWN SCARIFIER

1. Check the scarifier completely, including cable, controls, guards, and the tines. If

Before Starting Work...



anything is found damaged, do not use the lawn scarifier - contact the hire company.

2. Check that the plug on the machine matches the supply. Do not try to force connections or improvise them.
3. Machines with a cylindrical yellow industrial plug fitted are designed to run off a special 110v supply. The hire company will have provided a portable transformer if the machine needs to be powered from a normal mains 230v supply. If a portable transformer has been supplied, take care not to sustain an injury when moving it about - it may be heavier than it appears. Machines designed to run directly from 230v mains will have either a normal square pin plug fitted, or a blue industrial plug.
4. If the scarifier has a tine depth setting, adjust it initially so that the tines do not dig too deep and damage the lawn.
5. Check that the handle is unfolded into the operating position, and that the locking handnuts are done up tight. If the handle is adjustable, set it to the most comfortable height before locking the handnuts.
6. Always hold the lawn scarifier correctly with both hands when working.
7. Make sure that all of the controls are understood. Before starting the scarifier,



it must be known how to stop you must know how to control and stop it.

ELECTRICAL SAFETY

The machine will only operate on one voltage: it will be 110v or 230v. 110v machines will have a yellow industrial plug fitted. 230v machines will have either a normal square pin plug fitted, or a blue industrial plug. Read the instructions below for the machine.

110 VOLT EQUIPMENT (YELLOW PLUG)

1. If a portable transformer is being, plug the transformer directly into the 230 volt socket. Do not use any 230v extension cables.
2. If an extension cable is needed, follow any special instructions given by the hire company. If the hire company have not given any special instructions, only a suitably rated heavy duty 110v extension cable, not longer than 50 metres (160 feet) should be used. An extension cable must only be used between the transformer and the machine.
3. Lay the extension cable out carefully avoiding liquids, sharp edges, doorways or windows where it might be trapped, and places where vehicles might run



over it. Unroll it fully or it will overheat and could catch fire.

4. Make sure that any extension cable connections are dry and safe.

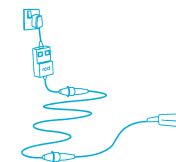
230 VOLT EQUIPMENT (SQUARE PIN OR BLUE PLUG)

1. Use a residual current device ("rcd") plugged directly in to the 230volt socket. Plug the machine into the rcd. This will help to protect against electric shock if the cable or machine get damaged.



2. Use the "TEST" button to check that the rcd is working each time it is used. Reset the rcd according to the instructions supplied with it.

3. If an extension cable is needed, follow any special instructions given by the hire company. If the hire company have not given any special instructions, only a suitably rated heavy duty cable, not longer than 50 metres (160 feet) should be used. Plug it directly into the rcd.



4. Lay it out carefully avoiding liquids, sharp edges, doorways or windows where it might be trapped, and places where vehicles might run over it. Unroll it fully or it will overheat and could catch fire.
5. Make sure that any extension cable connections are dry and safe.