

## Using the Dehumidifier

1. Ensure the unit is sited in a safe secure position before switching on.
2. Check the water level regularly and empty as necessary.
3. Keep cables clear of any sharp edges in the work area.
4. If the cable appears to be cut or damaged in any way, switch off and unplug at the mains before inspecting it. If the cable attached to the dehumidifier is damaged, stop using the equipment. Contact the hire company. If an extension cable has been damaged, do not use it again.
5. Do not restart the dehumidifier immediately after switching it off – this can be harmful to the equipment. Leave it for approx. 5 minutes before restarting.
6. Take care not to accidentally pull the plug from the socket.
7. Switch off and remove the plug from the socket before carefully moving the unit.
8. Switch off and remove the plug when not using the unit.
9. If the equipment does not work properly do not attempt to repair it. Contact the hire company.

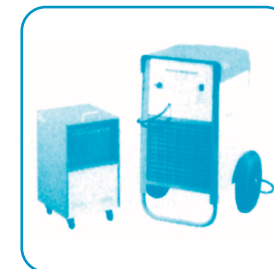
**Please keep this leaflet safely as it may be required for future reference**

## Dehumidifier

**The rules and procedures in force where people are at work may require the person responsible for this equipment to carry out a specific risk assessment.**

### **It is important to read this entire leaflet BEFORE using the dehumidifier**

1. Plan your work and think ahead to make sure you will always be working safely.
2. Electricity is dangerous and must always be used with great care.
3. Electricity and water make a very dangerous combination. Keep electrical equipment away from rain and water.
4. This dehumidifier is designed to help dry out new buildings and other buildings which have become temporarily damp.
5. The weight of this dehumidifier can cause injury or damage if the equipment is not moved in a careful and controlled way.
6. If you have not used a dehumidifier before, familiarise yourself with how it works before you set it up.
7. You should have at least the following items of protective equipment: rcd if using a 230 volt (mains) supply.
8. This equipment must not be used by minors, or by anyone under the influence of drugs or alcohol.
9. This dehumidifier is designed for operation by an able bodied adult. Anyone with either temporary or permanent disability must seek expert advice before using it.



## WORK AREA

1. Do not use this dehumidifier where there is a danger of explosion. It will ignite fumes from petrol or gas cylinders.
2. Keep others including children and animals well away from the area.
3. The outer doors and windows of the building being dried must be kept closed while the equipment is in use.
4. To dry out a large building, locate a dehumidifier on each floor. If you only have one dehumidifier move it to different floors starting on the lowest floor. Keep upper doors shut until you move to that level.
5. The dehumidifier works best if the temperature in the area is at least 60°F or 16°C.
6. This dehumidifier can be left unattended once it has been set up safely.

## DEHUMIDIFIER

1. Check the equipment: cables, plugs and all equipment. If anything is found to be damaged, do not use the dehumidifier – contact the hire company.
2. Check the plug on the equipment matches the supply. Do not try to force connections or improvise them.
3. Equipment with a cylindrical yellow industrial plug fitted is designed to run off a special 110v supply. The hire company will have provided a portable transformer if the equipment is to be powered from a normal mains 230v supply. If a portable transformer has been supplied, take care not to become injured when moving it about – it may be heavier than you think. Equipment designed to run directly from 230v mains will have either a normal square pin plug fitted or a blue industrial plug.

## Before Starting Work...



4. If using a 110v transformer remember it will get hot in use. If it is left standing on a carpet it may “iron” a permanent flat patch where it stood.
5. Do not block or cover the air intakes and outlets on the dehumidifier.
6. Do not put the dehumidifier closer than 1m (3 feet) to any wall.
7. Do not use this dehumidifier in rain or where it might get wet.
8. Only use the dehumidifier in its correct operating position.
9. The dehumidifier will produce water almost continuously whilst in use.
10. The drain outlet pipe should slope downward and must be placed in a permanent drain or sink, or fed to a closed container to prevent re-evaporation.
11. If using a closed container like a plastic screw top container, check and empty the water frequently to ensure it does not overflow.
12. Some dehumidifiers have their own built in water container and water level gauge.
13. Ice will normally form on the condenser coil and should defrost itself regularly. If the ice forms into a solid block switch off and contact the hire company immediately.
14. Do not use any form of heat to remove the ice.

15. Do not restart the dehumidifier immediately after switching off – this can be harmful to the equipment. Leave for about 5 minutes before restarting.
16. Check how the control switches work. Before switching on the dehumidifier ensure the stop switch can be located.

## EQUIPMENT

Your equipment will only operate on one voltage; it will be 110v or 230v.

110v equipment will have a yellow industrial plug fitted.

230v equipment will have either a normal square pin plug fitted or a blue industrial plug. Read the instructions below for your equipment.

## 110 VOLT MACHINES (YELLOW PLUG)

1. If a portable transformer is being used, plug the transformer directly into the 230v socket. Do not use any 230v extension cables.
2. If an extension cable is required, follow any special instructions given by the Hire Company. If the hire company has not given any special instructions a suitably rated heavy duty 110v extension cable, not longer than 50 metres (160 feet) should be used. An extension cable must only



be used between the transformer and the equipment.

3. Lay the extension cable out carefully avoiding liquids, sharp edges, doorways or windows where it may be trapped and places where vehicles might run over it. Unroll it fully or it will overheat and it may catch fire.
4. Ensure any extension cable connections are dry and safe.

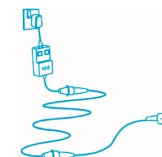
## 230 VOLT MACHINES (SQUARE PIN OR BLUE PLUG)

1. Use a residual current device (“rcd”) plugged directly into the 230v socket. Plug the equipment into the rcd. This will help to protect against electric shock if the cable or equipment is damaged.



2. Use the “TEST” button to check the rcd is working each time it is used. Reset the rcd according to the instructions supplied with it.

3. If an extension cable is required, follow any special instructions given by the Hire Company. If the hire company has not given any special instructions a suitably rated heavy duty extension cable not longer than 50 metres (160 feet) should be used. Plug the cable directly into the rcd.



4. Lay the cable out carefully avoiding liquids, sharp edges, doorways or windows where it may be trapped, and places where vehicles might run over it. Unroll it fully or it will overheat and it may catch fire.
5. Ensure any extension cable connections are dry and safe.