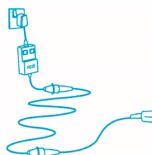


230 VOLT MACHINES

(SQUARE PIN OR BLUE PLUG) (continued)

2. Use the "TEST" button to check that the rcd is working each time you use it. Reset the rcd according to the instructions supplied with it.
3. If you need an extension cable, follow any special instructions given by the hire company. If the hire company have not given any special instructions, you should only use a suitably rated heavy duty one, not longer than 50 metres (160 feet). Plug it directly into the rcd.
4. Lay it out carefully avoiding liquids, sharp edges, doorways or windows where it might be trapped, and places where vehicles might run over it. Unroll it fully or it will overheat and could catch fire.
5. Make sure that any extension cable connections are dry and safe.



USING THE COMPRESSOR

1. Wear your protective equipment, including ear defenders and goggles.
2. Check that any air lubrication container is topped up with the recommended oil.
3. When you have set up the compressor, switch on and check that everything operates properly.

4. Ensure there are no apparent air leaks.
5. At intervals, while working, stop and check for air leaks or other possible faults. Check the oil level in the container at the same time.
6. Stop work if someone approaches you.
7. You must stop the compressor and release the air pressure before you disconnect any part of your equipment.
8. If you think the cable may be cut or damaged in any way, switch off and remove the plug, before inspecting it. If the cable attached to the compressor is damaged, stop using the machine. Contact the hire company. If an extension cable has been damaged, do not use it again.
9. Take care not to accidentally pull the plug from the socket.
10. Switch off, unplug, and release the air pressure before you leave the compressor unattended.
11. If your compressor does not work properly, do not attempt to repair it. Contact the hire company.

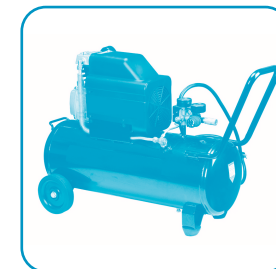
Please keep this leaflet safely as it may be required for future reference

Electric Compressor

The rules and procedures in force where people are at work may require the person responsible for this equipment to carry out a specific risk assessment.

It is important to read all of this leaflet BEFORE you use the Compressor

1. Plan your work and think ahead to make sure you will always be working safely.
2. Compressed air is hazardous and must be used carefully. Never aim a jet of compressed air at anyone.
3. Electricity is hazardous and must always be used with great care.
4. This compressor is designed to produce and store air at its rated pressure to enable you to run various compressed air-powered tools.
5. The action of this compressor can cause injury or damage if not used in a careful and controlled way.
6. If you have not used a compressor before, familiarise yourself with the equipment before you start work.
7. You must have at least the following items of personal protective equipment: impact resistant goggles: EN166 – B or BS2092 grade 1; dust mask – a minimum of EN149 FFP3(s) protection; ear muffs or plugs giving protection for levels up to 86 dB(A); gloves rcd if using a 230 volt (mains) supply.
8. This compressor must not be used by minors, or by anyone under the influence of drugs or alcohol.
9. This compressor is designed for operation by an able bodied adult. Anyone with either temporary or permanent disability must seek expert advice before using it.



WORK AREA

1. Do not use the compressor where there is a danger of explosion. It will ignite fumes from petrol, or gas cylinders.
2. Make sure that your work area is clear and safe and that no-one is near to you or could distract you.
3. Protect other people from the noise and danger. Warn others to keep away, put barriers around your work area.
4. Site your compressor on firm level ground as far as possible from other people to reduce the problem of noise.

OPERATORS

1. The following items of personal protective equipment (ppe) are the minimum that should be worn whenever you use this compressor. Particular jobs or environments may require a higher level of protection.
2. You must wear impact resistant goggles (EN166 – B or BS2092 grade 1) when you are working with this compressor.
3. This compressor is likely to cause noise levels up to 86 dB(A) – wear appropriate ear muffs or plugs giving hearing protection for this level as a minimum.
4. You will need to wear an appropriate dust mask (with a minimum of EN149 FFP3(s) protection) if your work with the compressor causes dust.
5. Anybody who is working near to you will also need to wear appropriate personal protective equipment.

COMPRESSOR

1. Check all your equipment, hoses, gauges, cables and plugs. If anything is

Before Starting Work...



- found damaged, do not use the compressor – contact the hire company.
2. Check that the plug on your machine matches your supply. Do not try to force connections or improvise them.
3. Machines with a cylindrical yellow industrial plug fitted are designed to run off a special 100v supply. The hire company will have provided a portable transformer if you need to power the machine from a normal mains 230v supply. If a portable transformer has been supplied, take care not to injure yourself when moving it about – it may be heavier than you think. Machines designed to run directly from 230v mains will have either a normal square pin plug fitted, or a blue industrial plug.
4. Usually, compressed air carries a minute amount of oil-mist to prevent air tools seizing up. Make sure that any lubrication container on your compressor is topped up with the recommended oil. Check the level regularly.
5. Compressed air can be hazardous, do not misuse it.
6. Do not obstruct or prevent safety devices from working.
7. Do not point a jet of compressed air at people or animals. It can cause injury even through clothing.

8. Do not blast air onto skin, it can blow splinter in. at high pressure, it will penetrate the skin and cause injury.
9. Do not use it to blow out dust and debris from portable tools, the airborne dust particles could be hazardous to health.
10. Do not use compressed air in any flame heating or cutting equipment that normally uses oxygen.
11. You must not blow it into any source of fire. It will generate greater heat and blow burning fragments around.
12. Do not use the compressor to supply any form of breathing equipment or to supplement or replace a ventilation system.
13. Compressed air must not be used to clean clothes or work areas. You must not use it in an unauthorised way or without correct equipment.
14. Do not use at a greater pressure than recommended.
15. Do not connect or disconnect any tool or pipe while the system is pressurised, release the pressure first.
16. Check on how the compressor operates – before you switch it on, you must know how to stop it.

ELECTRICAL SAFETY

Your machine will only operate on one voltage: it will be 110v or 230v. 110v machines will have a yellow industrial plug fitted. 230v machines will have either a normal square pin plug fitted, or a blue industrial plug. Read the instructions below for your machine.

110 VOLT HEATERS (YELLOW PLUG)

1. If you are using a portable transformer directly into the 230 volt socket. Do not use any 230v extension cables.
2. If you need to use an extension cable, follow any special instructions given by the hire company. If the hire company have not given any special instructions, you should only use a suitably rated heavy duty 100v extension cable, not longer than 50 metres (160 feet). You must only use an extension cable between the transformer and the machine.
3. Lay the extension cable out carefully avoiding liquids, sharp edges, doorways or windows where it might be trapped, and places where vehicles might run over it. Unroll it fully or it will overheat and could catch fire.
4. Make sure that any extension cable connections are dry and safe.



230 VOLT MACHINES (SQUARE PIN OR BLUE PLUG)

1. Use a residual current device ("rcd") plugged directly in to the 230 volt socket. Plug your machine into the rcd. This will help to protect you against electric shock if the cable or machine get damaged.



(continued overleaf...)