

## Using the Tile Saw

1. Wear your protective equipment including ear defenders and goggles.
2. Check the water level before you switch on. The bottom edge of the wheel must run in the water.
3. When you have set up the tile saw, switch on and check that it runs properly. Make sure that the water is being pumped through and that the lower edge of the wheel still runs in the water.
4. Switch off and unplug before topping up the water level.
5. With the saw switched off, place the tile on the table against the stop plate. Make sure it is clear of the cutting wheel.
6. Switch on and make sure the wheel is running at full speed before pushing the tile or table forward to cut the tile. Use your hands to hold the tile in place but keep them clear of the wheel.
7. If the machine starts to labour and slow down push the tile or table more slowly. Do not overload the machine.
8. Switch off if someone approaches you.
9. When the cut is complete, switch the saw off and allow it to stop before removing the cut tile.
10. Switch off and unplug before making any adjustments.
11. If you think the cable may be cut or damaged in any way, switch off and unplug at the socket before inspecting it. If the cable attached to the tile saw is damaged, stop using the machine. Contact the hire company. If an extension cable has been damaged, do not use it again.
12. Take care not to accidentally pull the plug from the socket.
13. Switch off and remove the plug from the socket before leaving the tile saw unattended.
14. When you have finished work clean down the machine. Wash and rinse the water tank. Do not wash the motor body but wipe it over. Return the equipment to the hire company in a clean condition.
15. If your equipment does not work properly do not attempt to repair it. Contact the hire company.
16. You may want to read this leaflet again. Please keep it until you finish work.

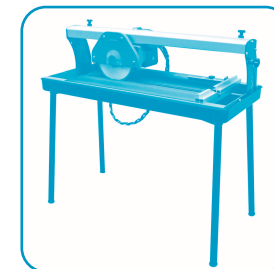
**Please keep this leaflet safely as it may be required for future reference**

## Tile Saw

**The rules and procedures in force where people are at work may require the person responsible for this equipment to carry out a specific risk assessment.**

**It is important to read all of this leaflet  
BEFORE you use the Tile Saw**

1. Plan your work and think ahead to make sure you will always be working safely.
2. Electricity is dangerous and must always be used with great care.
3. Electricity and water make a very dangerous combination. Keep electrical equipment away from rain and water.
4. This tile saw is designed to cut all types of ceramic and glazed tiles.
5. The action of this tile saw can cause injury or damage if the machine is not used in a careful and controlled way.
6. Do not use this saw for working involving asbestos or other hazardous materials.
7. If you have not used a tile saw before, familiarise yourself with the machine on some straightforward work before you start on the main task.
8. You must have at least the following items of personal protective equipment: goggles: EN166 – B or BS2092 grade 1; ear muffs or plugs giving protection for levels up to 95 dB(A); gloves; rcd if using a 230 volt (mains) supply.
9. This tile saw must not be used by minors, or by anyone under the influence of drugs or alcohol.
10. This tile saw is designed for operation by an able bodied adult. Anyone with either temporary or permanent disability must seek advice before using it.



## WORK AREA

1. Do not use this tile saw where there is a danger of explosion. It will ignite fumes from petrol, or gas cylinders.
2. Make sure that the area is clear and safe and that no-one is near to you or could distract you.
3. Protect other people from the noise and spray. Warn others to keep away.
4. Set up the tile saw on a firm flat surface and lay the electric cable carefully away from the cutting wheel. Make sure that you cannot trip over the cable while working.
5. Do not use this saw in the rain or where it might get wet.

## OPERATORS

1. The following items of personal protective equipment (ppe) are the minimum that should be worn whenever you use this machine. Particular jobs or environments may require a higher level of protection.
2. You must wear impact resistant goggles (EN166 – B or BS2092 grade 1) when you are working with this tile saw.
3. This tile saw is likely to cause noise levels up to 95 dB(A) – wear appropriate ear muffs or plugs giving hearing protection for this level as a minimum.
4. Anybody who is working near to you will also need to wear appropriate personal protective equipment.

## TILE SAW

1. Check your machine, cables, plugs and diamond cutting wheels. If anything is found damaged, do not use the tile saw – contact the hire company.
2. Check that the plug on your tile saw matches your supply. Do not try to force connections or improvise them.

# Before Starting Work...



3. Tile saws with a cylindrical yellow industrial plug fitted are designed to run off a special 110v supply. The hire company will have provided a portable transformer if you need to power the machine from a normal mains 230v supply. If a portable transformer has been supplied, take care not to injure yourself when moving it about – it may be heavier than you think. Tile saws designed to run directly from 230v mains will have either a normal square pin plug fitted, or a blue industrial plug.
4. Check the water level in the tank each time you use the saw. You should clean the tank and refill with water at least once a day and more frequently with continuous use.
5. If your machine has a sliding table to carry the tile up to the cutting wheel, make sure that it can move freely.
6. Check on how the on/off switch operates before you switch the tile saw on, you must know how to stop it.

## DIAMOND WHEELS

1. Switch off, remove the plug from the socket and let the machine stop before making adjustments or changing the diamond wheel.
2. Make sure you use the correct type of diamond wheel recommend by the hire company for the material being cut.

3. Check that the diamond wheel is fitted correctly.
4. When fitting diamond wheels you must comply with the direction of rotation mark on the wheel.
5. Make sure the guards are in place and adjusted correctly.

## ELECTRICAL SAFETY

Your machine will only operate on one voltage: it will be 100v or 230v. 110v machines will have a yellow industrial plug fitted. 230v machines will have either a normal square pin plug fitted, or a blue industrial plug. Read the instructions below for your machine.

### 110 VOLT HEATERS (YELLOW PLUG)

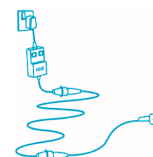
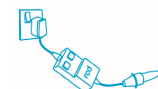
1. If you are using a portable transformer, plug the transformer directly into the 230 volt socket. Do not use any 230v extension cables.
2. If you need to use an extension cable, follow any special instructions given by the hire company. If the hire company have not given any special instructions, you should only use a suitably rated heavy duty 110v extension cable, not longer than 50 metres (160 feet). You must only use an extension cable between the transformer and the machine.



3. Lay the extension cable out carefully avoiding liquids, sharp edges, doorways or windows where it might be trapped, and places where vehicles might run over it. Unroll it fully or it will overheat and could catch fire.
4. Make sure that any extension cable connections are dry and safe.

### 230 VOLT MACHINES (SQUARE PIN OR BLUE PLUG)

1. Use a residual current device (“rcd”) plugged directly in to the 230 volt socket. Plug your machine into the rcd. This will help to protect you against electric shock if the cable or machine get damaged.
2. Use the “TEST” button to check that the rcd is working each time you use it. Reset the rcd according to the instructions supplied with it.
3. If you need an extension cable, follow any special instructions given by the hire company. If the hire company have not given any special instructions, you should only use a suitably rated heavy duty one, not longer than 50 metres (160 feet). Plug it directly into the rcd.
4. Lay it out carefully avoiding liquids, sharp edges, doorways or windows where it might be trapped, and places where vehicle might run over it. Unroll it fully or it will overheat and could catch fire.
5. Make sure that any extension cable connections are dry and safe.





For guidance on managing  
construction health risks go to  
[www.hse.gov.uk/construction](http://www.hse.gov.uk/construction)



## Using the Tile Saw

1. Wear your protective equipment including ear defenders and goggles.
2. Check the water level before you switch on. The bottom edge of the wheel must run in the water.
3. When you have set up the tile saw, switch on and check that it runs properly. Make sure that the water is being pumped through and that the lower edge of the wheel still runs in the water.
4. Switch off and unplug before topping up the water level.
5. With the saw switched off, place the tile on the table against the stop plate. Make sure it is clear of the cutting wheel.
6. Switch on and make sure the wheel is running at full speed before pushing the tile or table forward to cut the tile. Use your hands to hold the tile in place but keep them clear of the wheel.
7. If the machine starts to labour and slow down push the tile or table more slowly. Do not overload the machine.
8. Switch off if someone approaches you.
9. When the cut is complete, switch the saw off and allow it to stop before removing the cut tile.
10. Switch off and unplug before making any adjustments.
11. If you think the cable may be cut or damaged in any way, switch off and unplug at the socket before inspecting it. If the cable attached to the tile saw is damaged, stop using the machine. Contact the hire company. If an extension cable has been damaged, do not use it again.
12. Take care not to accidentally pull the plug from the socket.
13. Switch off and remove the plug from the socket before leaving the tile saw unattended.
14. When you have finished work clean down the machine. Wash and rinse the water tank. Do not wash the motor body but wipe it over. Return the equipment to the hire company in a clean condition.
15. If your equipment does not work properly do not attempt to repair it. Contact the hire company.
16. You may want to read this leaflet again. Please keep it until you finish work.

**Please keep this leaflet safely as it may be required for future reference**

0917

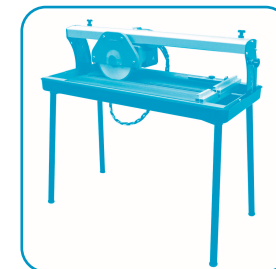
**Safety Guidance**  
ELECTRIC  
v:122016



## Tile Saw

**The rules and procedures in force where people are at work may require the person responsible for this equipment to carry out a specific risk assessment.**

**It is important to read all of this leaflet  
BEFORE you use the Tile Saw**



1. Plan your work and think ahead to make sure you will always be working safely.
2. Electricity is dangerous and must always be used with great care.
3. Electricity and water make a very dangerous combination. Keep electrical equipment away from rain and water.
4. This tile saw is designed to cut all types of ceramic and glazed tiles.
5. The action of this tile saw can cause injury or damage if the machine is not used in a careful and controlled way.
6. Do not use this saw for working involving asbestos or other hazardous materials.
7. If you have not used a tile saw before, familiarise yourself with the machine on some straightforward work before you start on the main task.
8. You must have at least the following items of personal protective equipment: goggles: EN166 – B or BS2092 grade 1; ear muffs or plugs giving protection for levels up to 95 dB(A); gloves; rccl if using a 230 volt (mains) supply.
9. This tile saw must not be used by minors, or by anyone under the influence of drugs or alcohol.
10. This tile saw is designed for operation by an able bodied adult. Anyone with either temporary or permanent disability must seek advice before using it.

v:122016



Hire Association Europe  
2450 Regents Court  
The Crescent  
Birmingham Business Park  
Solihiull B37 7YE

Telephone: 44 (0) 121 380 4600  
Fax: 44 (0) 121 333 4109  
Email: [mail@hae.org.uk](mailto:mail@hae.org.uk)  
website: [www.hae.org.uk](http://www.hae.org.uk)

Every effort has been made by HAE/EHA to ensure that the information given in this document and supporting material is accurate and not misleading. HAE/EHA cannot accept responsibility for any loss or liability perceived to have arisen from the use of any such document/material. Only Acts of Parliament and Statutory Instruments have the force of law and only the courts can authoritatively interpret the law.

## WORK AREA

1. Do not use this tile saw where there is a danger of explosion. It will ignite fumes from petrol, or gas cylinders.
2. Make sure that the area is clear and safe and that no-one is near to you or could distract you.
3. Protect other people from the noise and spray. Warn others to keep away.
4. Set up the tile saw on a firm flat surface and lay the electric cable carefully away from the cutting wheel. Make sure that you cannot trip over the cable while working.
5. Do not use this saw in the rain or where it might get wet.

## OPERATORS

1. The following items of personal protective equipment (ppe) are the minimum that should be worn whenever you use this machine. Particular jobs or environments may require a higher level of protection.
2. You must wear impact resistant goggles (EN166 – B or BS2092 grade 1) when you are working with this tile saw.
3. This tile saw is likely to cause noise levels up to 95 dB(A) – wear appropriate ear muffs or plugs giving hearing protection for this level as a minimum.
4. Anybody who is working near to you will also need to wear appropriate personal protective equipment.

## TILE SAW

1. Check your machine, cables, plugs and diamond cutting wheels. If anything is found damaged, do not use the tile saw – contact the hire company.
2. Check that the plug on your tile saw matches your supply. Do not try to force connections or improvise them.

# Before Starting Work...



3. Tile saws with a cylindrical yellow industrial plug fitted are designed to run off a special 110v supply. The hire company will have provided a portable transformer if you need to power the machine from a normal mains 230v supply. If a portable transformer has been supplied, take care not to injure yourself when moving it about – it may be heavier than you think. Tile saws designed to run directly from 230v mains will have either a normal square pin plug fitted, or a blue industrial plug.
4. Check the water level in the tank each time you use the saw. You should clean the tank and refill with water at least once a day and more frequently with continuous use.
5. If your machine has a sliding table to carry the tile up to the cutting wheel, make sure that it can move freely.
6. Check on how the on/off switch operates before you switch the tile saw on, you must know how to stop it.

## DIAMOND WHEELS

1. Switch off, remove the plug from the socket and let the machine stop before making adjustments or changing the diamond wheel.
2. Make sure you use the correct type of diamond wheel recommend by the hire company for the material being cut.

3. Check that the diamond wheel is fitted correctly.
4. When fitting diamond wheels you must comply with the direction of rotation mark on the wheel.
5. Make sure the guards are in place and adjusted correctly.

## ELECTRICAL SAFETY

Your machine will only operate on one voltage: it will be 100v or 230v. 110v machines will have a yellow industrial plug fitted. 230v machines will have either a normal square pin plug fitted, or a blue industrial plug. Read the instructions below for your machine.

### 110 VOLT HEATERS (YELLOW PLUG)

1. If you are using a portable transformer, plug the transformer directly into the 230 volt socket. Do not use any 230v extension cables.
2. If you need to use an extension cable, follow any special instructions given by the hire company. If the hire company have not given any special instructions, you should only use a suitably rated heavy duty 110v extension cable, not longer than 50 metres (160 feet). You must only use an extension cable between the transformer and the machine.



3. Lay the extension cable out carefully avoiding liquids, sharp edges, doorways or windows where it might be trapped, and places where vehicles might run over it. Unroll it fully or it will overheat and could catch fire.
4. Make sure that any extension cable connections are dry and safe.

### 230 VOLT MACHINES (SQUARE PIN OR BLUE PLUG)

1. Use a residual current device (“rcd”) plugged directly in to the 230 volt socket. Plug your machine into the rcd. This will help to protect you against electric shock if the cable or machine get damaged.
2. Use the “TEST” button to check that the rcd is working each time you use it. Reset the rcd according to the instructions supplied with it.
3. If you need an extension cable, follow any special instructions given by the hire company. If the hire company have not given any special instructions, you should only use a suitably rated heavy duty one, not longer than 50 metres (160 feet). Plug it directly into the rcd.
4. Lay it out carefully avoiding liquids, sharp edges, doorways or windows where it might be trapped, and places where vehicle might run over it. Unroll it fully or it will overheat and could catch fire.
5. Make sure that any extension cable connections are dry and safe.

