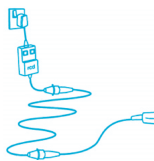


230 VOLT MACHINES (...continued)
(SQUARE PIN OR BLUE PLUG)

3. If you need an extension cable, follow any special instructions given by the hire company. If the hire company have not given any special instructions, you should only use a suitably rated heavy duty one, not longer than 50 metres (160 feet). Plug it directly into the rcd.
4. Lay it out carefully avoiding liquids, sharp edges, doorways or windows where it might be trapped, and places where vehicles might run over it. Unroll it fully or it will overheat and could catch fire.
5. Make sure that any extension cable connections are dry and safe.



USING THE DEMOLITION HAMMER

1. Wear your protective equipment including ear defenders and goggles.
2. Keep the cable clear of the tool bit and any sharp edges on your work.
3. Do not operate the hammer without first pressing the tool bit against the work surface.
4. Do not allow the nosepiece to rest or drag in the dirt or in wet concrete without a tool bit fitted. Keep the nosepiece clean.
5. Use a dust shield fitted to the shank of the tool bit when using the hammer horizontally or overhead, to prevent dirt

and dust entering the machine. Check with the hire company.

6. During cold weather, the hammer will be sluggish until it warms up. During this warm up period, continue to hold the hammer against the work surface – do not run the hammer unless you are pressing the tool bit against the work surface.
7. Watch out for signs that vibration may be affecting your hands. If your fingers start to tingle or feel numb, take a short break from using the hammer. Exercise your fingers to encourage blood circulation.
8. To help prevent vibration affecting your hands, operate the machine for shorter periods. Keep your hands warm - wearing gloves may help do this.
9. If you think the cable may be cut or damaged in any way, switch off and unplug at the mains before inspecting it. If the cable attached to the demolition hammer is damaged, stop using the machine. Contact the hire company. If an extension cable has been damaged, do not use it again.
10. Take care not to accidentally pull the plug from the socket.
11. Switch off and remove the plug from the socket before leaving the demolition hammer unattended.
12. If your equipment does not work properly do not attempt to repair it. Contact the hire company.

Kango 900 Demolition Hammer

The rules and procedures in force where people are at work may require the person responsible for this equipment to carry out a specific risk assessment.

It is important to read all of this leaflet BEFORE using the Kango 900

1. Plan your work and think ahead to make sure you will always be working safely.
2. Electricity can be hazardous and must always be used with great care.
3. This Kango demolition hammer is designed to break up or cut away concrete, brickwork and masonry, dig heavy clay, do light overhead breaking and remove plaster. It can also be used for tamping and similar jobs, using the appropriate tools.
4. The action of this demolition hammer can cause injury or damage if the machine is not used in a careful and controlled way.
5. If you have not used a demolition hammer before, familiarise yourself with the machine on some straightforward work before you start on the main task.
6. You must have at least the following items of personal protective equipment: goggles: impact resistant EN166 – B or BS2092 grade 1 dust mask – a minimum of EN149 FFP3(s) protection; ear muffs or plugs giving protection for levels up to 100 dB(A); safety boots to EN345 or BS1870/4972; gloves; rcd if using a 230 volt (mains) supply.
7. This machine must not be used by minors, or by anyone under the influence of drugs or alcohol.
8. This Kango demolition hammer is designed for operation by an able bodied adult. Anyone with either temporary or permanent disability must seek expert advice before using it.



WORK AREA

1. Do not use this demolition hammer where there is a danger of explosion. It will ignite fumes from petrol or gas cylinders.
 2. Make sure that the area is clear and safe and that no-one is near to you or could distract you.
- (Continued overleaf...)

Please store this leaflet safely. It may be required for further information



WORK AREA (...continued)

1. Do not use this demolition hammer where there is a danger of explosion. It will ignite fumes from petrol or gas cylinders.
2. Make sure that the area is clear and safe and that no-one is near to you or could distract you.
3. Protect other people from the noise, debris and dust. Warn others to keep away, put barriers around your work area.
4. Check that there are no hidden electric cables, gas or water pipes where you are working.
5. Breaking brick and masonry makes a large amount of dust and debris – cover any surfaces or objects that may be damaged, or difficult to clean.
6. If you are breaking through a wall, ensure that the rubble that will fall on the other side will not cause injury or damage.

OPERATORS

1. The following items of personal protective equipment (ppe) are the minimum that should be worn whenever you use this machine. Particular jobs or environments may require a higher level of protection.
2. You must wear impact resistant goggles (EN166 – B or BS2092 grade 1) when you are working with this machine.
3. This equipment is likely to cause noise levels up to 100 dB(A) – wear appropriate ear muffs or plugs giving hearing protection for this level as a minimum.
4. You will need to wear an appropriate dustmask (with a minimum of EN149 FFP3(s) protection) when you are breaking material that causes dust.

Before Starting Work...



5. You must wear safety boots (EN345 or BS1870/4972).
6. Anybody who is working near to you will also need to wear appropriate personal protective equipment.

KANGO 900 ELECTRIC DEMOLITION HAMMER

1. Check your machine, cables, plugs and tool bits. If anything is found damaged, do not use the demolition hammer – contact the hire company.
2. Check that the plug on your machine matches your supply. Do not try to force connections or improvise them.
3. Machines with a cylindrical yellow industrial plug fitted are designed to run off a special 110v supply. The hire company will have provided a portable transformer if you need to power the machine from a normal mains 230v supply. If a portable transformer has been supplied, take care not to injure yourself when moving it about – it may be heavier than you think. Machines designed to run directly from 230v mains will have either a normal square pin plug fitted, or a blue industrial plug.
4. Always grip the front 'D' handle in your left hand and use your right hand to grip the back handle and to control the trigger and the trigger lock.
5. When the trigger is squeezed in, the power is on; when released, the power is switched off.
6. The trigger lock is a small button that can be pressed in while the trigger is being



squeezed. This will lock the trigger in the 'on' position.

7. To unlock the trigger, just squeeze it in and release it.
8. Push the tool bit against the workpiece before operating the hammer. Do not operate the hammer with no load on.
9. Vibration from using this demolition hammer can be hazardous. Warm your hands up before you start work, and wear gloves to keep your hands warm while you are working.
10. Check on how the on/off switch operates – before you switch the demolition hammer on, you must know how to stop it.

TOOL BITS


1. Switch the demolition hammer off, and unplug it before changing the tool bit.
2. Push the retainer latch across to the open position before removing the old tool bit. The latch is the small round pin at the front of the machine. When the new tool bit is in place, push the retainer latch to the close position.
3. The shank of the new tool bit should be clean and lightly oiled before insertion in to the demolition hammer. Remember to close the retainer latch.
4. You must only use the correct tool bits specifically for this demolition hammer. You must not use any other tool bits.

ELECTRICAL SAFETY

Your machine will only operate on one voltage: it will be 100v or 230v. 110v

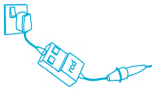
machines will have a yellow industrial plug fitted. 230v machines will have either a normal square pin plug fitted, or a blue industrial plug. Read the instructions below for your machine.

110 VOLT MACHINES (YELLOW PLUG)

1. If you are using a portable transformer, plug the transformer directly into the 230 volt socket. Do not use any 230v extension cables. 
2. If you need to use an extension cable, follow any special instructions given by the hire company. If the hire company have not given any special instructions, you should only use a suitably rated heavy duty 110v extension cable, not longer than 50 metres (160 feet). You must only use an extension cable between the transformer and the machine.
3. Lay the extension cable out carefully avoiding liquids, sharp edges, doorways or windows where it might be trapped, and places where vehicles might run over it. Unroll it fully or it will overheat and could catch fire.
4. Make sure that any extension cable connections are dry and safe.

230 VOLT MACHINES

(SQUARE PIN OR BLUE PLUG)

1. Use a residual current device ("rcd") plugged directly in to the 230 volt socket. Plug your machine into the rcd. This will help to protect you against electric shock if the cable or machine get damaged. 
2. Use the "TEST" button to check that the rcd is working each time you use it. Reset the rcd according to the instructions supplied with it.

(Continued overleaf...)