

Using the Belle Minimix Cement Mixer

110 VOLT MACHINES (YELLOW PLUG)

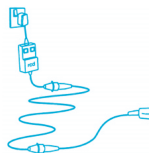
(Continued)

given any special instructions, you should only use a suitably rated heavy duty 110v extension cable, not longer than 50 metres (160 feet). You must only use an extension cable between the transformer and the machine.

3. Lay the extension cable out carefully avoiding liquids, sharp edges, doorways or windows where it might be trapped, and places where vehicles might run over it. Unroll it fully or it will overheat and could catch fire.
4. Make sure that any extension cable connections are dry and safe.

230 VOLT MACHINES (SQUARE PIN OR BLUE PLUG)

1. Use a residual current device ("rcd") plugged directly in to the 230 volt socket. Plug your machine into the rcd. This will help to protect you against electric shock if the cable or machine get damaged.
2. Use the "TEST" button to check that the rcd is working each time you use it. Reset the rcd according to the instructions supplied with it.
3. If you need an extension cable, follow any special instructions given by the hire company. If the hire company have not given any special instructions, you should only use a



suitably rated heavy duty one, not longer than 50 metres (160 feet). Plug it directly into the rcd.

4. Lay it out carefully avoiding liquids, sharp edges, doorways or windows where it might be trapped, and places where vehicles might run over it. Unroll it fully or it will overheat and could catch fire.
5. Make sure that any extension cable connections are dry and safe.

USING THE BELL MINIMIX CEMENT MIXER

1. Wear your protective equipment including ear defenders and goggles.
2. Do not move the mixer while the drum is full.
3. Do not move the mixer while it is still connected to the power supply.
4. If you think the cable may be cut or damaged in any way, switch off and unplug at the mains before inspecting it. If the cable attached to the mixer is damaged, stop using the machine. Contact the hire company. If any extension cable has been damaged, do not use it again.
5. Take care not to accidentally pull the plug from the socket.
6. Switch off and remove the plug from the socket before leaving the mixer unattended.
7. If your equipment does not work properly do not attempt to repair it. Contact the hire company.

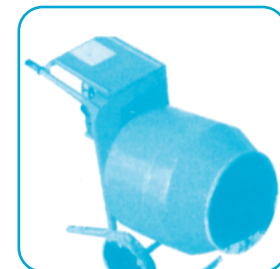
Please keep this leaflet safely as it may be required for future reference

Belle Minimix Cement Mixer

The rules and procedures in force where people are at work may require the person responsible for this equipment to carry out a specific risk assessment.

It is important to read this entire leaflet BEFORE using the Belle Minimix Cement Mixer

1. Plan your work and think ahead to make sure you will always be working safely.
2. Electricity can be hazardous and must always be used with great care.
3. Electricity and water make a very dangerous combination. Keep electrical equipment away from rain and water.
4. Cement mixes are harmful to eyes, lungs and skin. Follow any instructions given by the manufacturers of these cement products.
5. This Belle minimix cement mixer is designed for mixing concrete, mortar, plaster and similar compounds with water. It can also mix composts and other similar materials.
6. The action of this mixer can cause injury or damage if the machine is not used in a careful and controlled way.
7. If you have not used a Belle mini mix cement mixer before, familiarise yourself with how the machine works before you start on the main task.
8. You must have at least the following items of personal protective equipment: goggles: EN166 or BS2092; dust mask – a minimum of EN149 FFP3(s) protection; safety boots to EN345 or BS1870/4972; gloves; rcd if using a 230 volt (mains) supply.
9. This machine must not be used by minors, or by anyone under the influence of drugs or alcohol.
10. This Belle mini mix cement mixer is designed for operation by an able bodied adult. Anyone with either temporary or permanent disability must seek expert advice before using it.



CEMENT MIXES AND CONTACT DERMATITIS

1. Wet cement mix is a substance that can cause contact dermatitis.
2. Contact dermatitis is a rash that may occur when the skin reacts to certain substances. The rash can vary but it is usually itchy and causes flaky skin. The rash occurs only where the substance was in contact with the skin.
3. Wash cement or plastic or plaster mixes off your skin immediately. Thoroughly rinse out your eyes and seek medical advice if you get any type of cement mix in them.
4. Mild dermatitis will heal providing there is no further contact. If the rash persists seek medical advice.

BEFORE STARTING WORK WORK AREA

1. Do not use this cement mixer where there is a danger of explosion. It will ignite fumes from petrol, or gas cylinders.
2. To reduce the risk of serious or fatal injury from breathing toxic fumes, do not run mixer indoors unless you have good ventilation. Ensure that you have proper ventilation when working in other confined areas.
3. Make sure that the area is clear and safe and that no-one is near to you or could distract you.
4. Protect other people from the noise and dust, warn others to keep away, put barriers around your work area, put barriers around your work area.

OPERATORS

1. The following items of personal protective equipment (ppe) are the minimum that should be worn whenever you use this mixer. Particular jobs or environments may require a higher level of protection.

Before Starting Work...



2. You must wear goggles (EN166 or BS2092) when you are working with this machine.
3. You will need to wear an appropriate dustmask (with a minimum of EN149 FFP3(s) protection) when you are mixing materials that cause dust.
4. You must wear safety boots (EN345 or BS1870/4972).
5. You should wear gloves, long sleeves and full trousers to prevent the mixes coming into contact with your bare skin.
6. Anybody who is working near to you will also need to wear appropriate personal protective equipment.

BELLE MINIMIX CEMENT MIXER

1. Check your machine, cables, plugs, drum and stand. If anything is found damaged, do not use the mixer – contact the hire company.
2. Check that the plug on your machine matches your supply. Do not try to force connections or improvise them.
3. Machines with a cylindrical yellow industrial plug fitted are designed to run off a special 110v supply. The hire company will have provided a portable transformer if you need to power the machine from a normal mains 230v supply. If a portable transformer has been supplied, take care not to injure yourself when moving it about – it may be heavier than you think. Machines designed to run directly from 230v mains will have either a normal square pin plug fitted, or a blue industrial plug.



4. Check that the mixer is sited firmly and safely near to your work area.
5. Check on how the on/off switch operated – before you switch the mixer on, you must know how to stop it. Make sure that your mixer is switched off before you plug it into the supply.

DRUM

1. Always start the drum rotating before loading. Do not load a concrete mix into a stationary drum. Starting the mixer with a full load would be difficult and would strain the drum shaft.
2. Do not put your hand, shovel or anything other than the mix into the drum while it is rotating.
3. The rotation of the drum is slow but very powerful. It will not stop rotating until the power is switched off. Keep your hands out of the way.
4. Ensure the drum is rotating while emptying the mix.
5. When you have finished work, make sure the drum and the mixer is washed clean before the cement mix hardens. Two shovels full of clean gravel, with water, in the rotating drum will greatly assist removing any stubborn residue of the mix.
6. Always store the mixer in its normal upright position.
7. To remove the drum for storage or transportation, switch off, stand in front of the mixer and turn the drum anticlockwise.

When it has fully unscrewed, lift the drum off carefully.

8. Reverse this procedure to refit the drum, take care not to damage the threads.

STAND

1. Your Belle minimix is supplied with a stand, which raises the height of the mixer to make it easy to empty the drum into a wheelbarrow. The mixer can be used with or without the stand.
2. The stand should be sited on firm level ground near to your work area.
3. Two persons can then lift and locate the mixer onto the stand and secure with the locking clip.
4. Alternatively one man can tip the mixer so that it stands on the opening of the drum. Locate the stand into position and lock the clip. Tilt the stand and mixer back into the upright position. Make sure it is firmly sited. If you feel the mixer/stand is too heavy or if the ground is rugged, use two people.

ELECTRICAL SAFETY

1. Your machine will only operate on one voltage: it will be 100v or 230v. 100v machines will have a yellow industrial plug fitted. 230v machines will have either a normal square pin plug fitted, or a blue industrial plug. Read the instructions below for your machine.

110 VOLT MACHINES (YELLOW PLUG)

1. If you are using a portable transformer, plug the transformer directly into the 230 volt socket. Do not use any 230v extension cables.
2. If you need to use an extension cable, follow any special instructions given by the hire company. If the hire company have not



(Continued overleaf...)